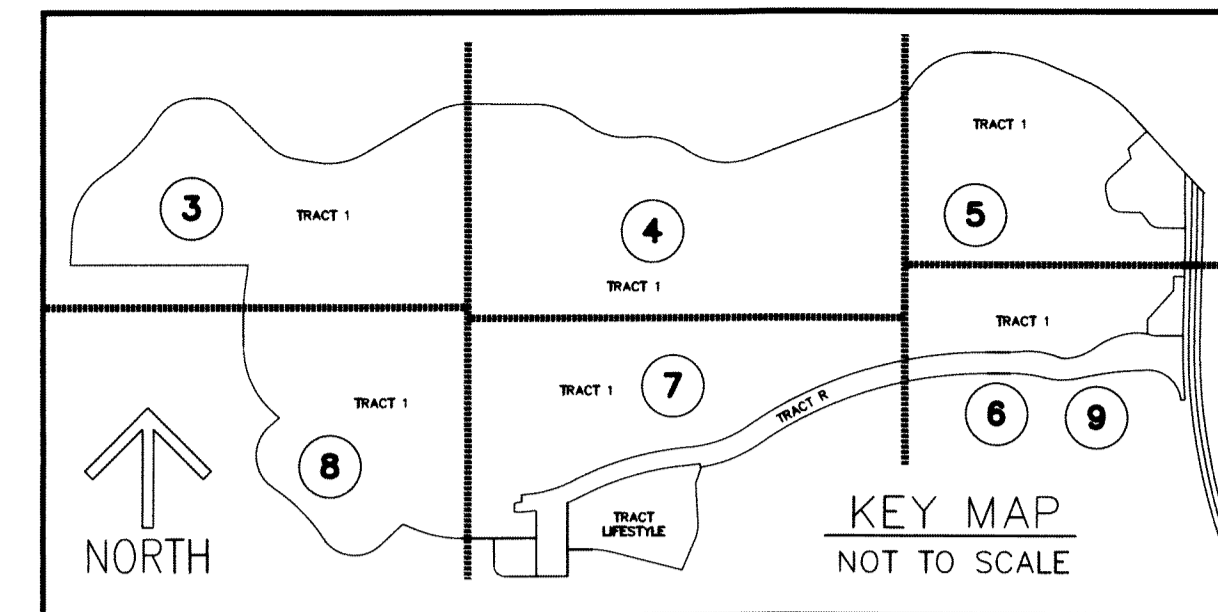


PANTHER NATIONAL AT AVENIR

BEING A REPLAT OF A PORTION OF AVENIR, PARCEL "A-1",
AS RECORDED IN PLAT BOOK 127, PAGES 85 THROUGH 109 OF
THE PUBLIC RECORDS OF PALM BEACH COUNTY, FLORIDA,
LYING IN SECTIONS 4, 8, & 9, TOWNSHIP 42 SOUTH, RANGE 41 EAST,
CITY OF PALM BEACH GARDENS, PALM BEACH COUNTY, FLORIDA.

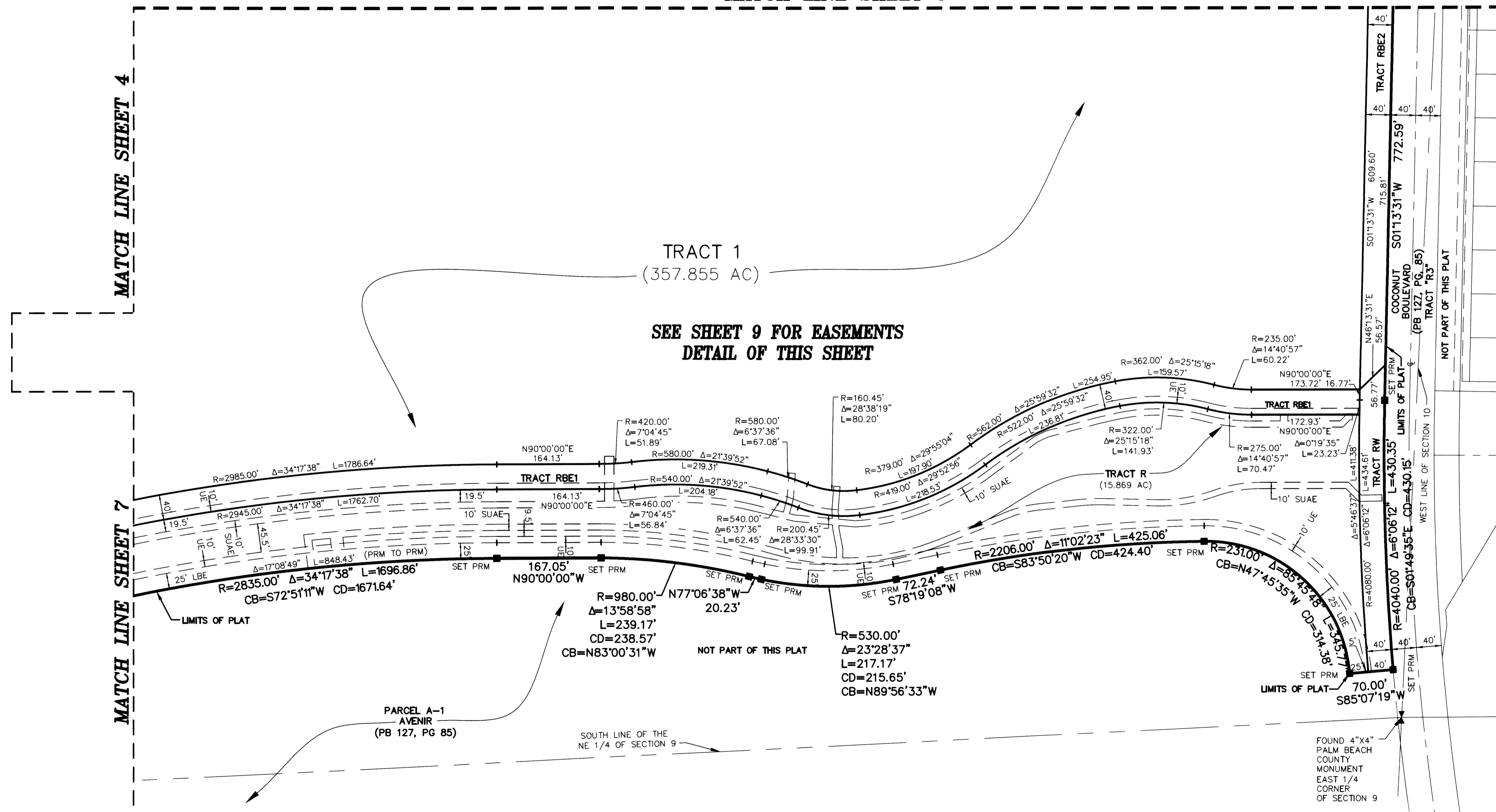
THIS INSTRUMENT PREPARED BY
RONNIE L. FURNISS
OF
CAULFIELD and WHEELER, INC.
SURVEYORS - ENGINEERS - PLANNERS
7900 GLADES ROAD, SUITE 100
BOCA RATON, FLORIDA 33434 - (561)392-1991
CERTIFICATE OF AUTHORIZATION NO. LB3591
JULY 2022



23

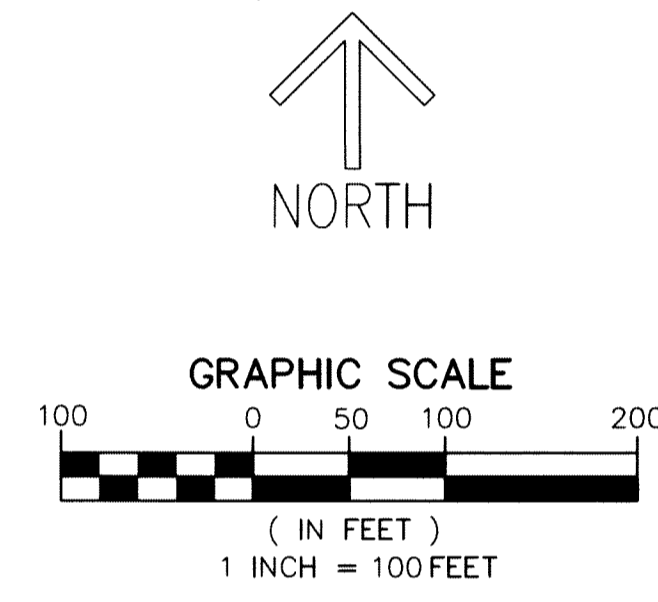
SHEET 6 OF 9

MATCH LINE SHEET 5



TRACT 1
(357.855 AC)

SEE SHEET 9 FOR EASEMENTS
DETAIL OF THIS SHEET



- LEGEND/ABBREVIATIONS**
- CL - CENTERLINE
 - Δ - DELTA (CENTRAL ANGLE)
 - AC - ACRES
 - CB - CHORD BEARING
 - CD - CHORD DISTANCE
 - DE - DRAINAGE EASEMENT
 - LA - ARC LENGTH
 - LA-E - LIMITED ACCESS EASEMENT
 - LB - LICENSED BUSINESS
 - LB-E - LANDSCAPE BUFFER EASEMENT
 - LSE - LIFT STATION EASEMENT
 - O.R.B. - OFFICIAL RECORD BOOK
 - PB - PLAT BOOK
 - PG - PAGE
 - P.P.A.E. - PERPETUAL PUBLIC ACCESS EASEMENT
 - (R) - INDICATES RADIAL LINE
 - RB - INDICATES RADIAL BEARING
 - RBE - ROADWAY BUFFER EASEMENT
 - SF - SQUARE FEET
 - SUA-E - SEACOAST UTILITY AUTHORITY EASEMENT
 - UE - UTILITY EASEMENT
 - PRM - DENOTES PERMANENT REFERENCE MONUMENT
 - - DENOTES PERMANENT CONTROL POINT
 - ⊕ - INDICATES 1/4 SECTION CORNER
 - ⊗ - INDICATES SECTION CORNER

MATCH LINE SHEET 4

MATCH LINE SHEET 7

PARCEL A-1
AVENIR
(PB 127, PG 85)

SOUTH LINE OF THE
NE 1/4 OF SECTION 9

FOUND 4"x4"
PALM BEACH
COUNTY
MONUMENT
EAST 1/4
CORNER
OF SECTION 9